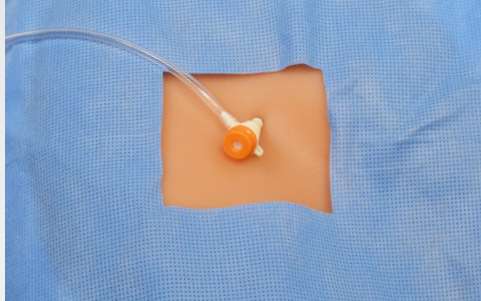


ER-REBOA™ PLUS Catheter Quick Reference Guide

“No One Should Bleed To Death”

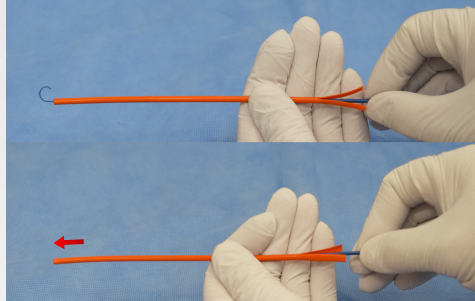
Prepare Catheter

Confirm 7Fr Sheath



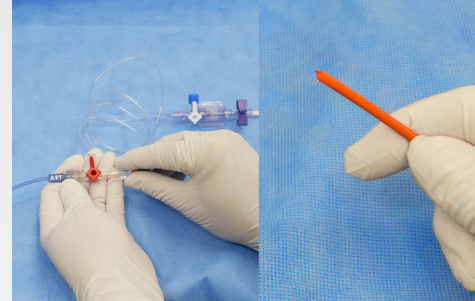
- Ensure compatible 7Fr sheath has been placed for arterial access

Prep BAL Line



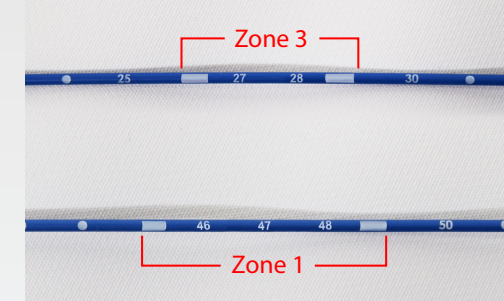
- Pull vacuum on BAL line and close stopcock
- Advance orange peel-away further to straighten and cover P-tip™

Flush ART Line



- Flush ART line of catheter

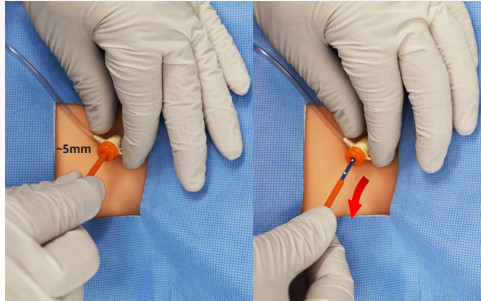
Determine Zone



- Confirm Zone 1 or Zone 3 target for catheter placement
- Zone 1 ~ 46 cm & Zone 3 ~ 28 cm

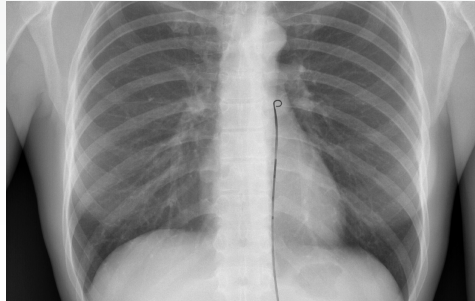
Perform REBOA

Insert



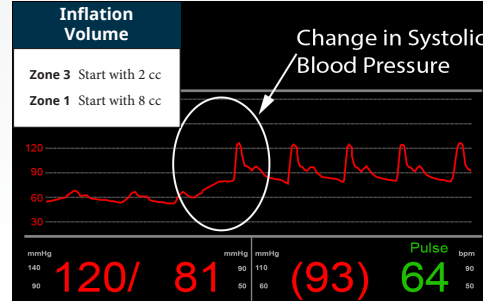
- Insert orange peel-away into valve ~5mm
- Advance catheter to zone, slide orange peel-away down as needed

Confirm Placement



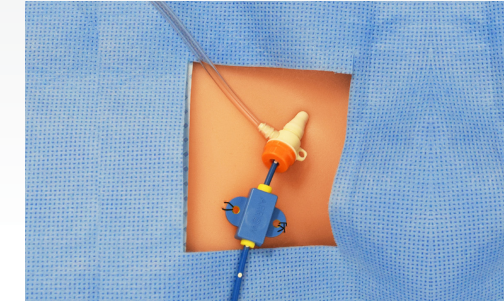
- If available, use X-ray or fluoroscopy to confirm placement
- Use radiopaque markers as balloon placement reference

Inflate and Monitor



- “Start 2, Start 8, then check”
- Inflate balloon to occlusion
- Monitor blood pressure, watch for increase

Secure



- Secure catheter close to the introducer sheath

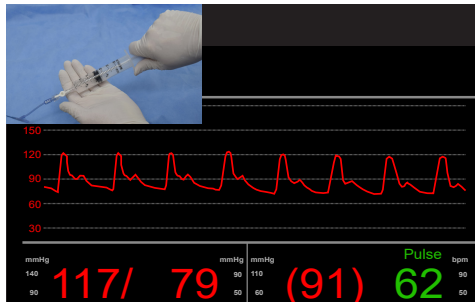
Resuscitation and Definitive Care

Provide Definitive Care



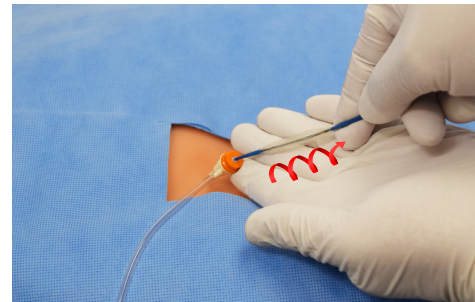
- The clock is ticking
- Move quickly to definitive control

Deflate Balloon & Monitor Patient



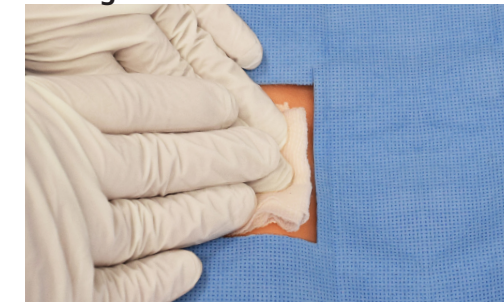
- Deflate slowly, monitor patient's response

Remove Catheter



- Fully deflate balloon and hold vacuum for 5 seconds then close stopcock
- Remove catheter

Manage Access Site



- Remove introducer sheath
- Check for full and equal pulse in each leg