

# CIRCA S-CATH™ & CIRCA TEMPERATURE MONITORING SYSTEM™



**Rapid, Radiopaque, & Large Surface Area  
Esophageal Temperature Sensing**

**ADVANCED TEMPERATURE MONITORING SYSTEM**

The CIRCA S-CATH™ and CIRCA Temperature Monitoring System™ address the problems associated with slow, single-sensor, small surface area, and low-radiopaque general purpose esophageal temperature probes and monitors.

General purpose esophageal temperature probes are typically constructed with a single thermistor or thermocouple embedded inside a 3-4mm wide probe tip. These general purpose probes are used during a variety of procedures but are slow to respond to temperature changes and difficult to see under x-ray guidance.

Some of these general purpose temperature probes and monitors only display new temperatures once every 2 seconds, or longer, and then only cover a small 3-5mm wide area of the esophagus’s 10-20mm potential width. The CIRCA S-Cath and CIRCA Temperature Monitoring System is a fast technology that senses a large surface area with multiple rapid-response sensors on a radiopaque probe.

*The speed, sensitivity, and ability to cover a large surface area is an improvement over general purpose systems.*

**IMPROVED PROBES**

CIRCA’s single-use radiopaque S-CATH includes 12 rapid-response temperature sensors to continuously sense for new temperatures. In addition, the S-CATH deploys in a two-plane modified “S” configuration that conforms to an 18mm+ wide area of the esophagus for visualization under x-ray.

- 10 French OD
- 12 Integrated Rapid-Response Temperature Sensors
- 50ms Refresh Rate (20-times-per-sensor-per-second)
- Two-Plane Self-Expanding Radiopaque Design
- Straightening Stylet for Insertion and Delivery

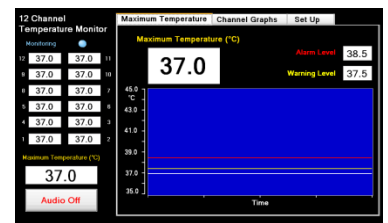
**IMPROVED MONITORING SYSTEM**

The CIRCA Temperature Monitoring System is a compact touch screen monitor that displays the individual temperature of each sensor 20-times-per-second. The monitor also simultaneously displays the warmest sensor on the probe. Temperatures are displayed in numerical and graphical formats and the clinician can set audible/visual warnings and alarms.

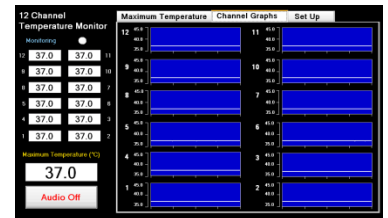
- Simultaneous Display of 12 Rapid-Response Temperature Sensors
- 50ms Refresh Rate (20-times-per-sensor-per-second)
- Continuous Maximum Temperature Display
- Graphical Display of Temperature Over Time
- User Selectable Visual and Audible Warnings and Alarms
- Pole Mount



CIRCA S-CATH In-Vivo



Maximum Temperature Screen



Channel Graphics Screen

Product Code	Description
CS-1000	CIRCA Temperature Monitor with Pole Mount
CS-2001	CIRCA S-CATH Esophageal Temperature Probe: Single Use 10 French and 50cm Working Length
CS-2002	CIRCA S-CATH Connection Cable: Reusable 10 Foot Working Length
CS-2003	CIRCA S-CATH Connection Cable: Reusable 15 Foot Working Length
CS-1029	CIRCA Temperature Reference Standard (Calibration)



**Sales and Marketing**

1920 East Hallandale Beach Blvd., Suite 905  
Hallandale, Florida 33009 USA  
www.CIRCASCIENTIFIC.com  
(954) 457-2450 Office  
(954) 457-2448 Fax

**Operations and Quality Assurance**

14 Inverness Drive East, Suite H-240  
Englewood, Colorado 80112USA  
www.CIRCASCIENTIFIC.com  
(303) 951-8767 Office  
(303) 951-8769 Fax

All the products carry the CE mark and comply with Medical Device Directive 93/42/EEC and are manufactured to Quality Systems ISO 13485.

This product is listed by CSA International as certified.

Indication for Use: The CIRCA S-CATH Esophageal Temperature Probe is intended for continuous temperature monitoring. The radiopaque probe is designed for placement in the esophagus. The Temperature Monitoring System is indicated to display continuous temperature measurement (degrees C) from 12-sensor temperature probe.